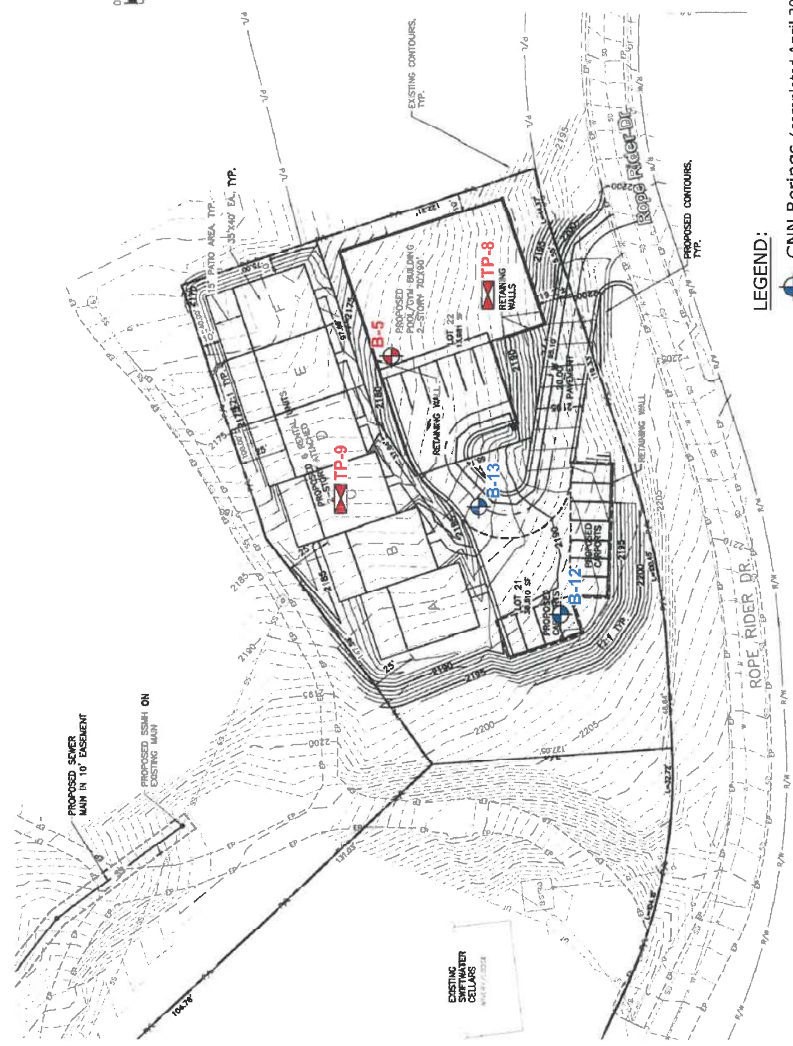
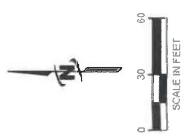


**NOTE:**  
 Combined base maps extracted from *Preliminary Utilities and Grading plans* (Sheets 2 & 3) prepared by JUB Engineers, Inc. dated 8/1/2017.

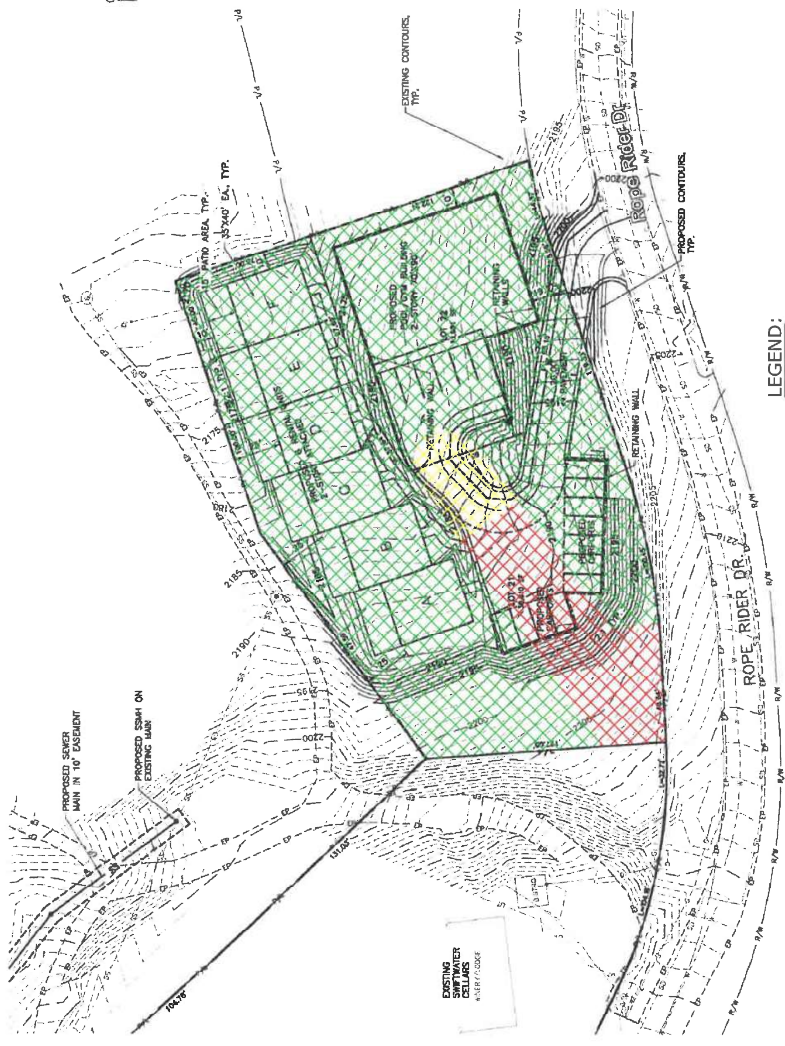
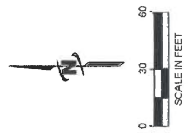


- LEGEND:**
- GNN Borings (completed April 2018)
  - GNN Borings (completed October 2017)
  - GNN Test-Pits (completed October 2017)

**NOTE:**  
 Base map extracted from *Preliminary Utilities and Grading plan*  
 (Sheet 4) prepared by JUB Engineers, Inc. dated 7/27/2017.





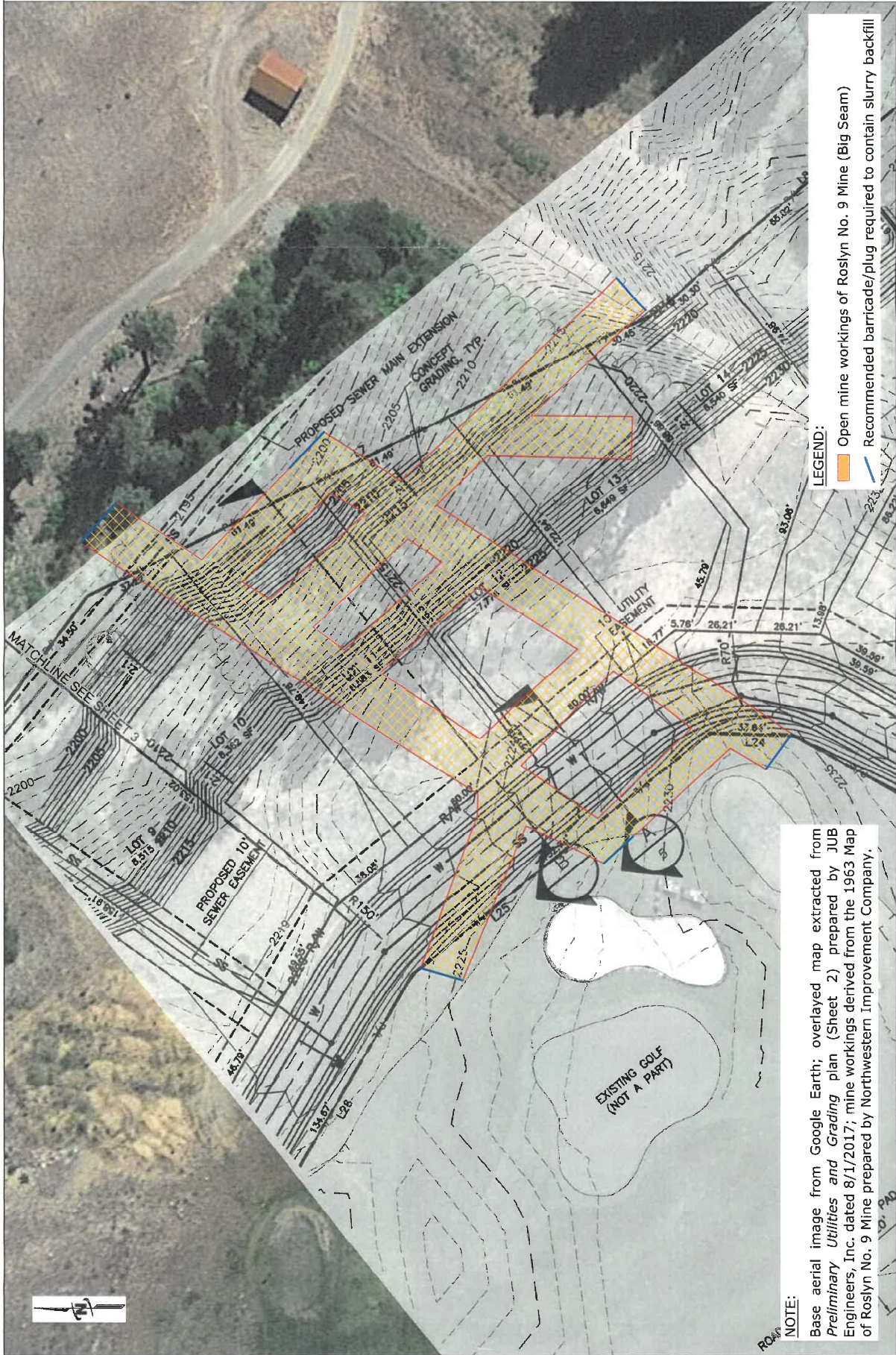


**LEGEND:**

- "Declassified" No Significant Mine Hazard - Buildable Areas
- Low Mine Hazard - Buildable Areas with Mitigation
- Moderate to Severe Mine Hazard - Unbuildable Areas\*  
 (\* refer to the geotechnical report for special mitigation measures)

**NOTE:**  
 Base map extracted from *Preliminary Utilities and Grading plan*  
 (Sheet 4) prepared by JUB Engineers, Inc. dated 7/27/2017.









**NOTE:**

Base aerial image from Google Earth; overlaid map extracted from Preliminary Utilities and Grading plan (Sheet 4) prepared by JUB Engineers, Inc. dated 8/1/2017; mine workings derived from the 1963 Map of Roslyn No. 9 Mine prepared by Northwestern Improvement Company.

SCALE 1"

**LEGEND:**

- Open mine workings of Roslyn No. 9 Mine (Big Seam)
- Recommended barricade/plug required to contain slurry backfill